

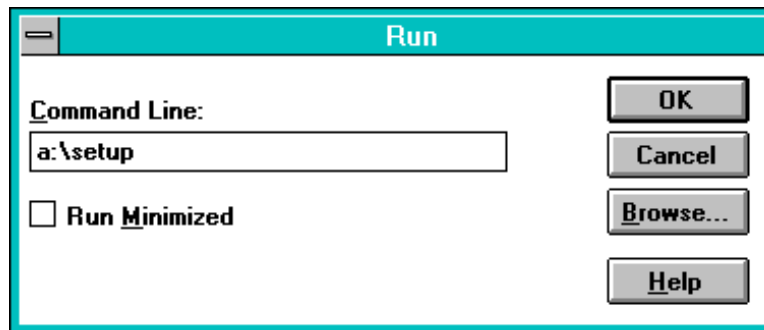
HP 34820A BenchLink Suite Connectivity Software

Installation Instructions



Please note that this information supersedes the installation instructions included in the User's Guide for each of the three versions of HP BenchLink software.

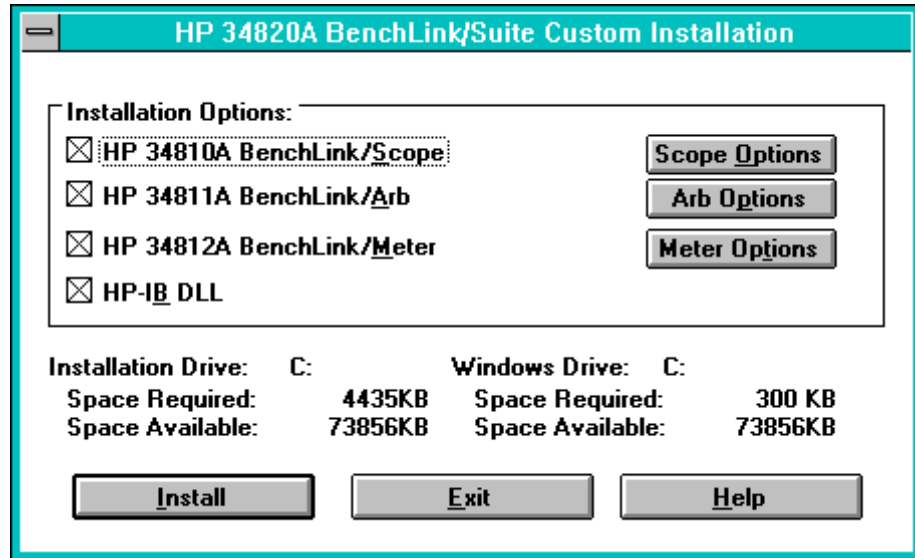
- 1 Insert the HP BenchLink floppy disk #1 in your computer disk drive.
- 2 Save any work in progress. Close unneeded applications. Select **File|Run...** at the Program Manager. Type **a:\setup** in the COMMAND LINE text box and press ENTER or click OK. Change the drive letter if needed (i.e., **b:\setup**).



- 3 During the installation process, the setup program will prompt you for the directory where you want to place the files. Click INSTALL to accept the default installation directory. Click SET LOCATION and type a new drive and directory in the INSTALL TO text box if you want to place the files in a different location.

Part Number 34820-90001
January 1995

- 4 You can choose which HP BenchLink applications you want to install. Choose COMPLETE INSTALLATION to install all three HP BenchLink applications along with their Help files and Readme files. Choose CUSTOM INSTALLATION to select which of the three HP BenchLink applications you want to install.



HP BenchLink's installation program displays the size of the files you select to install. It also verifies that your destination disk drive has space available for those files.

- 5 The installation program will create a new program group in the Program Manager and add the icons for the HP BenchLink applications that you selected.

During the setup program, you will be prompted to enter your name and your company name. This information will appear in the banner screen each time you start HP BenchLink.